

ADDENDUM NO. 1

for

Northeast Metro Intermediate School District - ISD 916

Wide Area Network RFP, published 12/16/2015

January 4, 2016

This Addendum is to be included as part of the original proposal documents. The Proposer is bound but not limited to all requirements stated herein.

TO: ALL PROPOSERS OF RECORD

ADDENDUM NO. 1

This Addendum shall hereby be and become part of the Contract Documents the same as if originally bound thereto.

The following clarifications, amendments, additions, revisions, changes and modifications change the original Contract Documents only in the amount and to the extent hereinafter specified in this Addendum.

Each Proposer shall acknowledge receipt of this Addendum in its proposal response.

NOTE: Proposers are responsible for becoming familiar with every item of this Addendum.

A. DOCUMENT MODIFICATIONS AND CLARIFICATIONS:

1. **ADDITIONAL INFORMATION A:** prospective Proposers may arrange to view building entrance facilities. The timeframe for these visits is December 30, 2015 – January 8, 2016. **Contact Jason Kopp at Jason.Kopp@nemetro.k12.mn.us or (651) 415-5504 to make an appointment.**
2. **ADDITIONAL INFORMATION B:** The current fiber transport contract for Mahtomedi Academy expires on **5/31/2017** which is different than the other Zayo contracted sites. Northeast Metro 916 would like this site to become part of the new contract for services with the same term expiration as the other sites, but **STARTING** on 5/31/2017.
3. **ADDITION:** Following Section 1.23, ADD the following:
 - 1.23A Evaluation Process
 - a. During the evaluation process the District may request clarification(s) from one or more Proposers. Such requests will be made in writing. Responses to these requests for clarification must be made in writing and provided within the requested timeframe (typically 3 business days). For evaluation purposes, responses to the requests for clarification may be considered along with the original responses. However, the District reserves the right to make an award without further clarification of the responses received. Therefore, it is important that each response be submitted in the most complete manner possible.
 - b. The District reserves the right to request oral presentations and the opportunity to interview key personnel.
 - c. The District reserves the right to select the number of proposers for any oral presentations or interviews.
 - d. The evaluation scores may be revised as a result of oral presentations.
4. **CORRECTION:** Section 4.17.3 (page 47). **CHANGE:** “the three (3) sites” to “the two (2) sites (Karner Blue and Metro Heights)”.
5. **CLARIFICATION A:** Section 1.4.2 #1 (page 8) – there will be two (2) underground paths into the Pankalo Center from the property boundaries, both of which will be provided and owned by the District.
6. **CLARIFICATION B:** Section 4.17.8: Centennial School District’s and Roseville Area Schools’ potential Internet connections are intended to be separate from that of ISD 916. Each district would have a completely independent link.

7. **CLARIFICATION C:** Section 3.2 #3 (p. 23). For dark fiber services to be eligible for E-rate funding, the fibers must be connected to active electronics. The District prefers that the Contractor provide SFP modules that would be placed in open module ports in existing District-owned (Extreme Networks brand) switches (rather than the Contractor providing additional, separate switches). **Include costs for such modules in your pricing proposal.**

B. QUESTIONS AND ANSWERS:

1. What does the District want to do regarding locates and repairs for underground fiber runs on district property? **Answer:** the District will handle locates internally. For repairs and/or moves, the District will hire those out on a Time & Materials basis. **If your firm offers fiber repair services, please fill in hourly rate(s) and trip charge(s) below:**

2. How have you contemplated connecting to Internet2? **Answer:** this has not yet been discussed/designed.
3. Since the Pankalo Center won't open until 2017, how do you envision the contract working for that site? **Answer:** The District anticipates it could not claim E-rate funding for this site until it is open. Thus the first year of the initial 5-year contract would not include this site. Also redundancy would not be required until the site opens.
4. How many staff and students are there at the sites listed as Add Alternates? **Answer:** The following are approximations: Arris (Add Alt. #1): 2 staff and 23 students; Willows (Add Alt. #2): 3 staff and 30 students; Auditory/Oral (Add Alt. #4): 3 staff and 20 students; WELS-North: 7 staff and 40 students.
5. What overall topology does the District want (for example, should all sites come back to one location)? **Answer:** the IDEAL situation would have all sites connecting to the Capitol View location. However, for sites that are on a ring this would not be necessary.
6. What are the lengths of outside conduit runs from hand holes at the property lines to the building entrance facilities at Pankalo, Karner Blue and Capitol View? **Answer:** the construction plans for Capitol View are not yet complete. The full site plans for the Pankalo site and Karner Blue site are the final two pages of this addendum.
7. What online content/services is the District using? **Answer:** Office 365 suite (including cloud-based SharePoint), YouTube, Google and Microsoft Azure services.
8. Are your voice services carried on the WAN? **Answer:** yes, IP telephony is used, so the WAN must support that.

9. Does the District require a connection to the 511 Building (peering site)? **Answer:** that is preferred, but not required.
10. Does the District provide your own Wi-Fi at your facilities? **Answer:** yes, everywhere except at the Stillwater site, but we anticipate adding it there as well.
11. Is the District doing any multicast? **Answer:** yes, but just for Wake On LAN at this time. We are considering doing videoconferencing in the future, which would require multicast.
12. Does the District have any building entrance agreements in place for the facilities it does not own? **Answer:** no, ISD 916 does not have building entrance agreements in place for any of the buildings as it relates to internet transport.

C. APPENDICES (EMBEDDED HEREAFTER):

1. The sign-in sheet from the 12/29/2015 Pre-Proposal Meeting, follows this page.
 - i. In addition, Steve Kopp of Arvig was also present in person, though did not sign the sheet. His email address is Steve.Kopp@arvig.com
 - ii. In addition to those present in person, Patricia Hahn of Zayo - patricia.hahn@zayo.com - participated by teleconference.
2. The last two pages are full site plan drawings for Pankalo and Karner Blue, in response to Question 6. Note that the Pankalo site is not yet fully built so changes still could be made.

END OF ADDENDUM NO. 1

Name	Company	Email
Phil McGREGOR	ARVING	PHIL.MCGREGOR@ARVING.COM
ROSS CRAIG	ARVING	ROSS.CRAIG@ARVING.COM
Chris Hanna	Comcast	christopher_hanna2@cable.comcast.com
STEVEN URQUHART	COMCAST	STEVEN_URQUHART@CABLE-COMCAST.COM



- GENERAL NOTES:**
- ALL BRANCH CIRCUITS SHALL HAVE DEDICATED NEUTRALS.
 - UTILITY TRANSFORMER, EMERGENCY GENERATOR, AND OWNER EQUIPMENT ARE APPROXIMATE LOCATIONS. SEE ARCHITECTURAL AND CIVIL PLANS FOR MORE INFORMATION.
 - PROVIDE TRACER WIRE IN ALL FUTURE OR SPARE UNDERGROUND CONDUITS.

- KEY NOTES:**
- LOCATION OF MAIN ELECTRICAL ROOM 1615. MAIN SWITCHBOARD AND SERVICE DISCONNECT LOCATED IN THIS ROOM.
 - LOCATION OF COMMUNICATIONS MAIN EQUIPMENT ROOM 1426.
 - INCOMING SERVICE CONDUCTORS FROM UTILITY TRANSFORMER TO MSB UNDERGROUND. REFER TO POWER FLOOR PLANS AND RISER DIAGRAM FOR ADDITIONAL INFORMATION.
 - (2) 4" TC WITH (3) MESH INTERDUITS IN EACH CONDUIT FOR COMMUNICATION SERVICE PROVIDERS CABLING. FIELD COORDINATE CONNECTION WITH CENTURY LINK.
 - (3) 4" TC FOR INCOMING XCEL ENERGY PRIMARY CONDUCTORS. ONE CONDUIT FOR INCOMING FEED. SECOND CONDUIT FOR OUTGOING FEED. AND THIRD CONDUIT FOR SPARE. COORDINATE FINAL ROUTING AND REQUIREMENTS WITH XCEL ENERGY. STUB CONDUITS UP INTO UTILITY TRANSFORMER PAD AT INDICATED TRANSFORMER LOCATION. AND CAP CONDUITS AT ROADWAY FOR XCEL ENERGY PRIMARY PATHWAY.
 - 24"X24"X24" FIBERGLASS HANDHOLE FOR COMMUNICATIONS CONDUIT TERMINATION POINT. COORDINATE FINAL LOCATION AND REQUIREMENTS WITH CENTURY LINK.
 - STUB UP LOCATION FOR COMMUNICATION SERVICE PROVIDERS CONDUITS. REFER TO SYSTEMS PLANS FOR INFORMATION REGARDING PULL BOX AND CONDUIT PATHWAY IN CEILING SPACE INTERIOR TO BUILDING.
 - EMERGENCY GENERATOR LOCATION. GENERATOR SHALL BE INCLUDED IN ALTERNATE E2. REFER TO SPECIFICATION SECTION 265500 FOR ADDITIONAL INFORMATION REGARDING GENERATOR ALTERNATE. PROVIDE PAD FOR GENERATOR THAT EXTENDS 4' BEYOND GENERATOR ENCLOSURE IN ALL DIRECTIONS. REFER TO RISER DIAGRAM FOR ADDITIONAL INFORMATION.
 - UNDERGROUND CONDUIT PATHWAY FROM GENERATOR ENCLOSURE TO ATS-E. REFER TO RISER DIAGRAM FOR ADDITIONAL REQUIREMENTS FOR CONDUIT AND CONDUCTOR SIZES.
 - LOCATION OF EMERGENCY ELECTRICAL EQUIPMENT ROOM 1613. EMERGENCY AUTOMATIC TRANSFER SWITCH LOCATED IN THIS ROOM.
 - 120V CONNECTIONS TO GENERATOR RECEPTACLE, HEATER, AND CHARGER.

This document may be an electronic file or may be printed from an electronic file provided to the user. It is the sole responsibility of the user to ensure that the content and quality is consistent with the content and quality of the paper documents on file at BWBR.

I hereby certify that this plan, specification or report was prepared by me or under my direct supervision and that I am a duly Licensed Professional Engineer under the laws of the State of Minnesota.

Name: *James J. Li* Electrical, P.E.
Date: 10/20/2015 Reg. No. 50358

Item	Date
DD PRICING PACKAGE	08/11/2015
CD ISSUE	10/20/2015

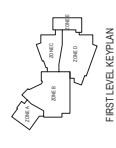
The bar above is 1" long on a Full Size Sheet. Drawing Scales apply to Full Size Sheets.

1 ELECTRICAL SITE PLAN
1/32" = 1'-0"

SITE LIGHTING FIXTURE SCHEDULE										POLE DESCRIPTION					BASE DESCRIPTION					NOTES					
LETTER	TYPE	MOUNTING	LAMPS/ LIGHT ENGINE	BALLAST/ DRIVER	VOLTAGE	MAX VA	CONTROL MEDIA (LENS/LOUVER)	MANUFACTURER SERIES NUMBERS	DESCRIPTION	POLE LENGTH	POLE SHAPE	POLE MATERIAL	POLE COLOR/FINISH	FIXTURE MOUNT	SUPPORTS CCTV CAMERA	SUPPORTS FLAG OR BANNER	INTEGRAL DUPLEX RECEPTACLE	VIBRATION DAMPERS	FOUNDATION		BASE HEIGHT ABOVE GRADE	BASE HEIGHT BELOW GRADE	BASE DIAMETER	VERTICAL BARS	TIES
AA1	AREA POLE LIGHT - ONE HEAD	6" ARM	LED 4000K 19,158 LUMENS	ELECTRONIC	120/277V	204W	TYPE IV WITH SPILL CONTROL	MCGRAW-EDISON #VTS SERIES BEACON #VPL SERIES	DIE CAST ALUMINUM HOUSING. HINGED DOOR. POLYESTER POWDER COAT PAINT. DARK BRONZE FINISH.	22'	ROUND TAPERED	STEEL	DARK BRONZE FINISH	MAST ARMS	NO	NO	NO	YES	CONCRETE BASE	3'	6'	24"	#4	#3	1
AA2	AREA POLE LIGHT - ONE HEAD	6" ARM	LED 4000K 19,924 LUMENS	ELECTRONIC	120/277V	204W	TYPE III WITH SPILL CONTROL	MCGRAW-EDISON #VTS SERIES BEACON #VPL SERIES	DIE CAST ALUMINUM HOUSING. HINGED DOOR. POLYESTER POWDER COAT PAINT. DARK BRONZE FINISH.	12'	ROUND TAPERED	STEEL	DARK BRONZE FINISH	MAST ARMS	NO	NO	NO	NO	CONCRETE BASE	6"	4' 6"	24"	#4	#3	1
BB1	AREA POLE LIGHT - TWO HEADS	6" ARM	LED 4000K 38,316 LUMENS	ELECTRONIC	120/277V	408W	TYPE IV WITH SPILL CONTROL	MCGRAW-EDISON #VTS SERIES BEACON #VPL SERIES	DIE CAST ALUMINUM HOUSING. HINGED DOOR. POLYESTER POWDER COAT PAINT. DARK BRONZE FINISH.	22'	ROUND TAPERED	STEEL	DARK BRONZE FINISH	MAST ARMS	NO	NO	NO	YES	CONCRETE BASE	3'	6'	24"	#4	#3	1

GENERAL NOTES:
 A. SEE SPECIFICATIONS FOR ADDITIONAL LIGHT FIXTURE REQUIREMENTS.
 B. MINIMUM LUMENS LISTED FOR SOLID STATE LIGHT FIXTURES ARE DELIVERED LUMENS BASED ON PHOTOMETRIC TESTING COMPLETED IN ACCORDANCE WITH IES LM-79 STANDARDS.

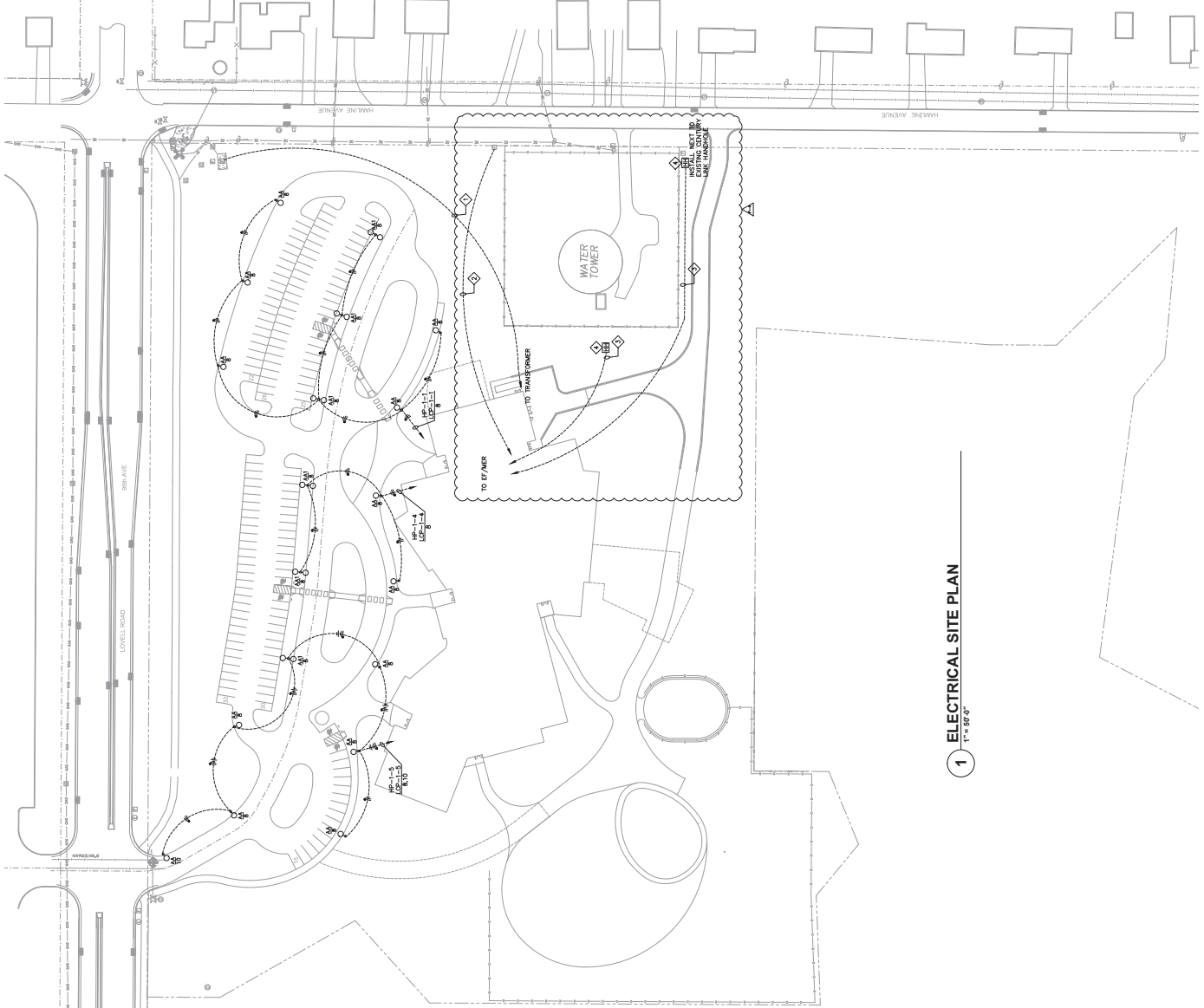
NOTES:
 1. REFER TO EXTERIOR POLE BASE DETAIL FOR ADDITIONAL INFORMATION.



DATE	DESCRIPTION
5/20/21	REVISED
5/20/21	ISSUED FOR PERMIT
5/20/21	ISSUED FOR CONSTRUCTION
5/20/21	ISSUED FOR CONSTRUCTION

- GENERAL NOTES**
- WORK SHOWN IS NEW, UNLESS OTHERWISE NOTED.
 - PROVIDE AN EQUIPMENT GROUND CONDUCTOR IN EACH BRANCH CIRCUIT RACEWAY.
 - PROVIDE ALL UNDERGROUND CONDUITS UNLESS OTHERWISE NOTED.
 - PROVIDE SCHEDULE 40 PFC FOR ALL UNDERGROUND CONDUITS UNLESS OTHERWISE NOTED. PROVIDE CONDUIT SIZE FOR UNDERGROUND CONDUITS. MINIMUM SIZE FOR UNDERGROUND CONDUITS: 1" FOR 1-200V, 1.5" FOR 208-240V, 2" FOR 277-480V.
 - PERMANENT PERMITTING (E.G. BUILDING, ELECTRICAL, AND MECHANICAL) SHALL BE OBTAINED PRIOR TO COMMENCEMENT OF WORK. CONTACT AT (763) 329-3888.
 - REFER TO DRAWINGS BOULDER THROUGH 800.5, FOR BOUNDARY-ADJACENT LIGHTING.

- KEY NOTES - DETAIL ONLY**
- ◇ PROVIDE IN-LINE USE KIT ACCESSIBLE FROM HANDHOLE
 - ◇ PROVIDE ALL GROUNDING TO GROUND ROD
 - ◇ PROVIDE SPARE #4 PFC CONDUIT FROM BASE TO CAP CONDUIT
 - ◇ PROVIDE BASE COVER
 - ◇ PROVIDE GAS UNDER POLE TO EDGE AS SECRE COMPARTMENT
 - ◇ PROVIDE ANCHOR BOLTS MANUFACTURED TO TYPE CONFIGURATION/TEMPLATE
 - ◇ PROVIDE REINFORCED FINISHED GRADE
 - ◇ PROVIDE #6 REINFORCEMENT RINGS
 - ◇ TYPICAL PFC CONDUIT
 - ◇ PROVIDE 3/4" x 1/4" ANCHOR RODS EXTEND ROD 2" ABOVE CONCRETE BASE
 - ◇ PROVIDE 1" x 1" GASKETS HORIZONTAL RISER ON 4000 PSI CONCRETE AFTER 28 DAYS



1 ELECTRICAL SITE PLAN
1" = 50'

