



Mission

Northeast Metro 916 Intermediate School District responds to the unique needs of students, educators, and school districts with innovation, quality, and trusted experience.

Vision



Preferred educational partner

to be a high value, efficient and responsive provider of regional educational programs and administrative services preferred by member districts, especially where scale and quality are critical.



System capacity builder

to raise the regional capacity for critical conversations, planning, operations and partnerships within member districts and beyond to public health, human services, civic and justice agencies.



Trusted resource of knowledge, research, and effective practices

to provide continuous development and delivery of regular and special educational services including effective practice tools and strategies in curriculum, instruction, assessment, equity, interventions and supports, accountability, professional development, applied and experiential learning.

Strategic direction



Next steps for students

based on individual needs



Staff engagement

to influence student and family engagement



Resource development

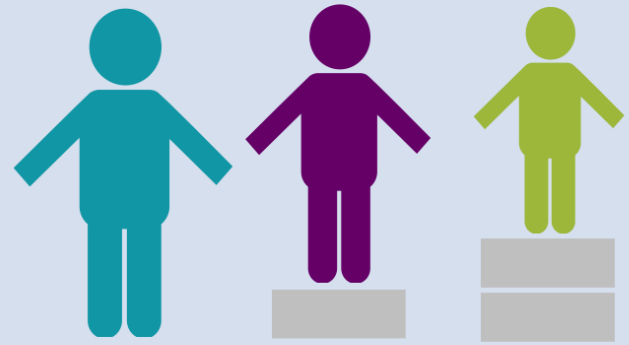
to deliver effective and efficient programs, services and operations



Commitment to equity

Vision

At Northeast Metro 916, equity is a core component of all our work and is necessary to maximize the potential of each individual student, staff and family. We believe equity is a continuous and challenging process in which we must work to recognize and reduce assumptions and biases to truly understand the needs and potential of those whom we support. We are dedicated to fully engaging with others about our differences and deepening conversations around dignity, inclusion and culture. We will hold ourselves accountable for our words and actions through our everyday interactions with each other. We are committed to using equity to guide all interactions, decisions and instruction.



Definition

Equity means that everyone has access to what they individually need in order to learn, grow and thrive.

Core values



Innovation

Unique, specialized design and delivery of programs and services.



Integrity

Behavior based on beliefs.
“Doing the right thing even when no one is watching.”



Accountability

Operating in a manner that is above reproach to utilize resources for maximum results for students and stakeholders.



Respect

Welcoming environment where difference in staff, students and districts are valued for the richness they bring to discussion, decisions and programs.



Collaboration

Working with parents, families, students, districts, and other agencies to develop effective and meaningful programming for students.